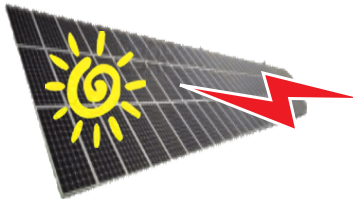


Manage distributed energy resources from a PC or mobile device with an NRGpilot portal

APPLICATIONS

- Monitor live performance, status, history
- Email alarms for fault diagnosis and maintenance
- Reports and data for billing and performance analysis
- Remote control for time of use, scheduling
- SMART Enterprise[™] for portfolio management

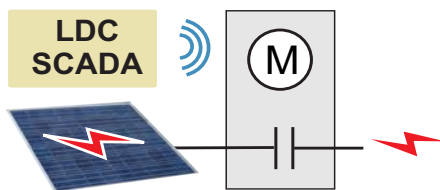
SOLAR



SolarVu[®] is a web energy portal that continuously monitors solar array performance displaying power, energy, revenue, status and trends on your PC or mobile device. *SolarVu* can be installed on systems of any size. It works with inverters and equipment from many different vendors.

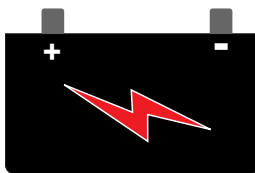
Receive a daily email report of income earned from your solar generation system. Get alarm messages when problems occur. Remotely view live inverter measurements and logs to speed up troubleshooting. Calculate ROI with the payback calculator or download lifetime data for performance analysis.

SCADA



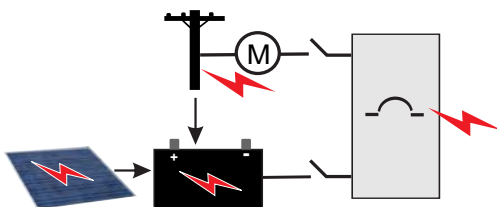
Many LDCs require a connection to their SCADA system as a condition in the CIA FIT contract. Each utility has different specifications ranging from simple metering to remote shutdown. Newer inverters include remote control capability for power factor correction and power output level control. A SCADA interface can be supplied by Cachelan to meet all requirements leading to successful grid connection either as standalone equipment or included with an *NRGpilot* portal.

STORAGE



Commercial scale batteries store energy from solar arrays or the grid during low demand periods. Power is consumed when needed at lower cost to take advantage of variable TOU (time of use) rates. Power can be sold on demand to a utility for peak shaving allowing reduced investment in generation capacity to meet peaks with behind the meter storage. Standby emergency power is available to keep critical loads operational especially for areas experiencing frequent outages. View live status, receive equipment alarms, change settings and perform manual control from an *NRGpilot* portal using a browser.

MICROGRID



Significant cost increases from utilities with a large differential in TOU rates is making local energy storage for time shifted use economically viable. Create a local microgrid to store energy generated by solar or purchased power at low night rates. Consume locally stored power during the day when utility supplied grid rates are higher. During power outages, the microgrid provides emergency standby power for critical loads. Manage microgrids in locations with high energy costs or unreliable utility power using an *NRGpilot* portal.

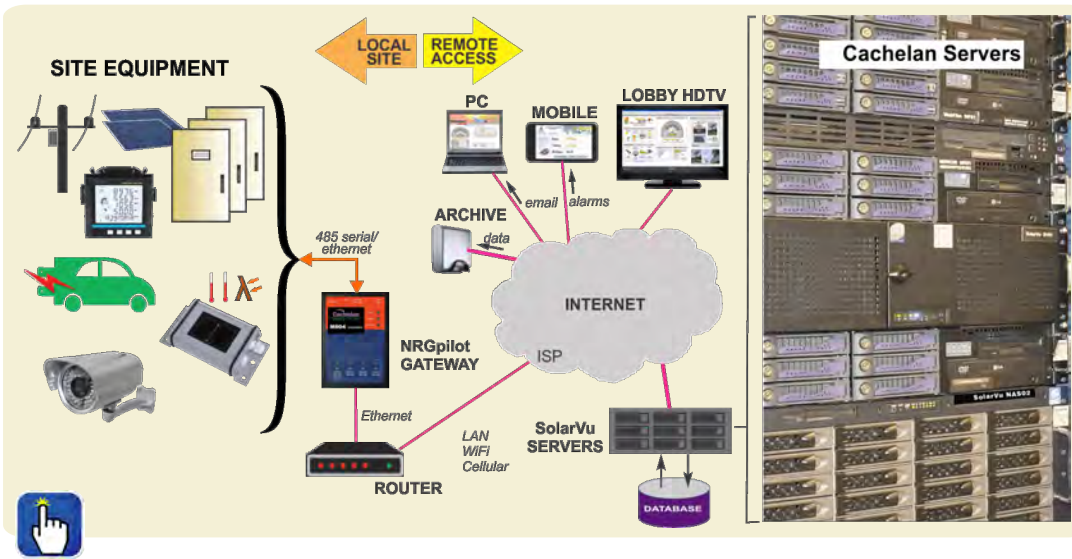
CHARGING



As consumers buy EVs (electric vehicles) demand for a place to plug in will rise. Owners of condos, apartments, office buildings and parking lots can install charging stations with an *NRGpilot* portal to monitor, bill and control power delivery. Commercial vehicle owners want detailed operating analysis of their fleet. With a large installed base of EVs, utilities can implement load shedding and V2G control for buying surplus power at peak loads. Manage V2G and G2V energy delivery with an *NRGpilot* portal.

Visit live sites at NRGpilot.com

How it works - Cloud Computing



A gateway is installed at the site which monitors equipment such as inverters, weather sensors, meters, cameras, and charge controllers. Data is sent by internet to Cachelan servers for lifetime storage and processing. Users access their *NRGpilot* portal from a browser on a PC or mobile device. No software needs to be installed or upgraded. When faults are detected an alarm is sent by email. Analysis tools like 30 day logs and live equipment status help O&M staff quickly determine what remedial action is required to minimize downtime. Data for any time period can be downloaded for performance analysis.

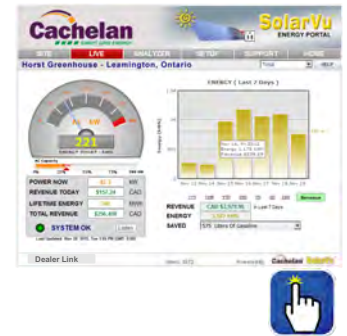
Portfolio Management

Manage multiple sites with diverse equipment using a SMART Enterprise account for complete portfolio status and navigation from a single log in.

Manage multiple sites with status, alarms and navigation

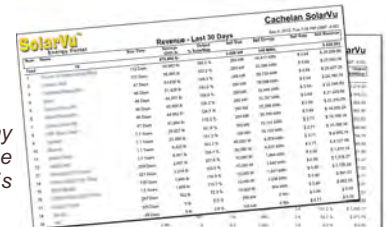
Rank	Status	Name	Run Time	Savings	Output	Sell Size	Sell Energy	Sell Rate	Sell Revenue	Setup
Total						2,689 kW	999 MWh		\$ 678,625	
1	Green					250 kW	226 MWh	\$ 0.64	\$ 143,646	Setup
2	Green					100 kW	151 MWh	\$ 0.71	\$ 107,680	Setup
3	Green		1.1 Years	174,900 lb	93.8 %	100 kW	130 MWh	\$ 0.71	\$ 92,373.22	Setup
4	Green		1.0 Years	98,052 lb	107.6 %	50,000 W	73 MWh	\$ 0.71	\$ 51,786.14	Setup
5	Green		172 Days	108,609 lb	52.5 %	250 kW	80 MWh	\$ 0.64	\$ 51,086.45	Setup
6	Green		1.1 Years	85,185 lb	113.3 %	40,000 W	63 MWh	\$ 0.71	\$ 44,990.52	Setup
7	Green		47 D							Setup
8	Green		46 D							Setup
9	Green		46 D							Setup
10	Green		46 Days	45,649 lb	82.6 %	250 kW	33,814 kWh	\$ 0.64	\$ 21,471.95	Setup
11	Green		46 Days	45,034 lb	81.4 %	250 kW	33,358 kWh	\$ 0.64	\$ 21,349.32	Setup
12	Green		47 Days	41,666 lb	73.7 %	250 kW	30,863 kWh	\$ 0.64	\$ 19,598.32	Setup
13	Green		136 Days	25,159 lb	79.2 %	10,000 W	18,636 kWh	\$ 0.80	\$ 14,946.11	Setup
14	Green		1.5 Years	22,546 lb	86.0 %	10,000 W	16,701 kWh	\$ 0.80	\$ 13,393.06	Setup
15	Green		329 Days	20,312 lb	45.1 %	10,000 W	15,046 kWh	\$ 0.80	\$ 12,066.60	Setup
16	Green		321 Days	15,621 lb	101.2 %	10,000 W	11,571 kWh	\$ 0.80	\$ 9,279.94	Setup
17	Green					10 W	3,933 kWh	\$ 0.80	\$ 3,154.27	Setup
18	Green					9 kW	0 Wh			Setup
19	Green					9 kW	0 Wh			Setup

OWNER
Go to any site to check status, revenues and performance



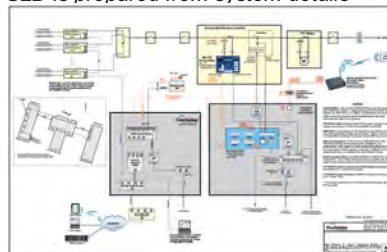
MAINTENANCE
Receive alarm messages when problems occur

INVESTOR
Create custom PDF reports for any time period. Download lifetime data for performance analysis



NRGpilot portals are configured using standard screen templates making them more affordable than custom software. Renewable energy systems are rapidly developing and may require new features. Ask about requirements that are not currently shown on the live site examples to discuss how they can be addressed for your application. Use an *NRGpilot* portal for remote monitor and control of site equipment with online document retrieval. Cost will vary depending on installed devices and options. *NRGpilot* portals are pre-configured to go live as soon as the system equipment is connected, ready to use. *NRGpilot* portals can also be retrofitted to existing systems. Contact Cachelan with your system details for a quote and detailed design.

SLD is prepared from system details



Site hardware is configured for installed equipment



cachelan.com contactus@cachelan.com
905.470.8400



Interactive brochure with live sites & videos
cachelan.com/link-NRGpilot